



# Books and Bibles for Judy's Hope

How we can offer additional support to families in healing.



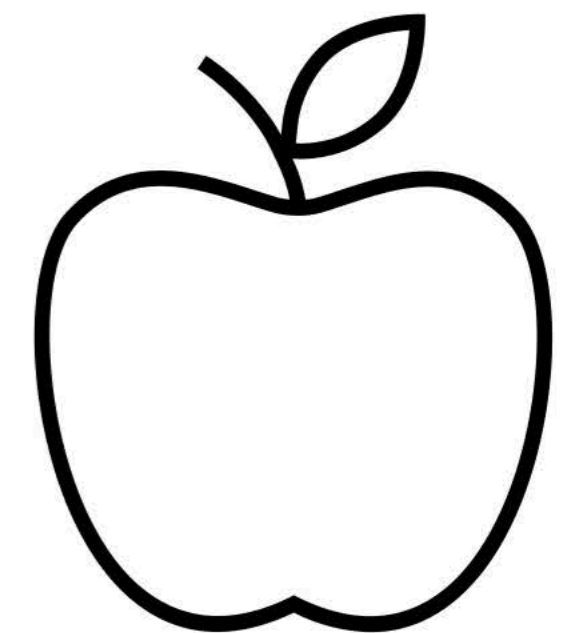
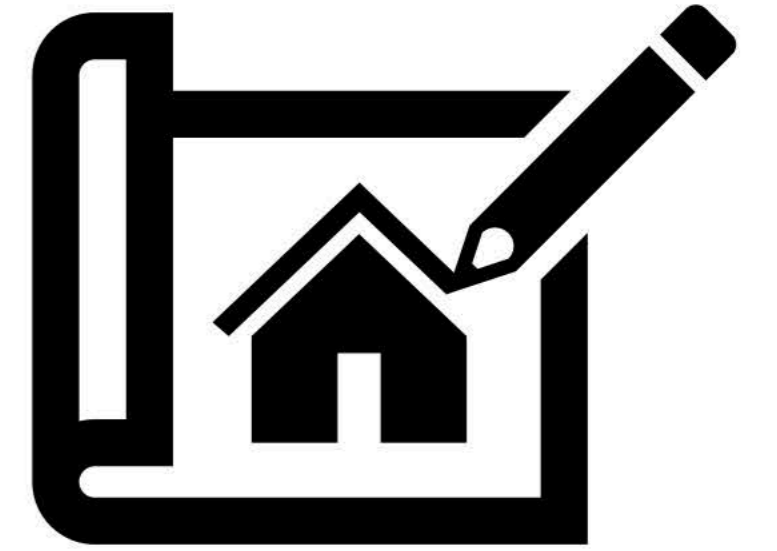
# What is Judy's Hope?

“Judy's Hope has come about because of a God-given desire to support women and children in hard places... Participants of Judy's Hope will find a safe, Christ-oriented environment that will allow women to live alone with their child(ren) in a tiny house while developing the skills needed to step out on their own. These women will find mentorship in home economics, securing a job, parenting, walking with Christ and more as they rebuild a firm foundation to live independently. It is the mission of Judy's Hope to open doors to a future and a hope for women and children as we guide them into their next step of life.” -Karen Powers, Founder, Judy's Hope



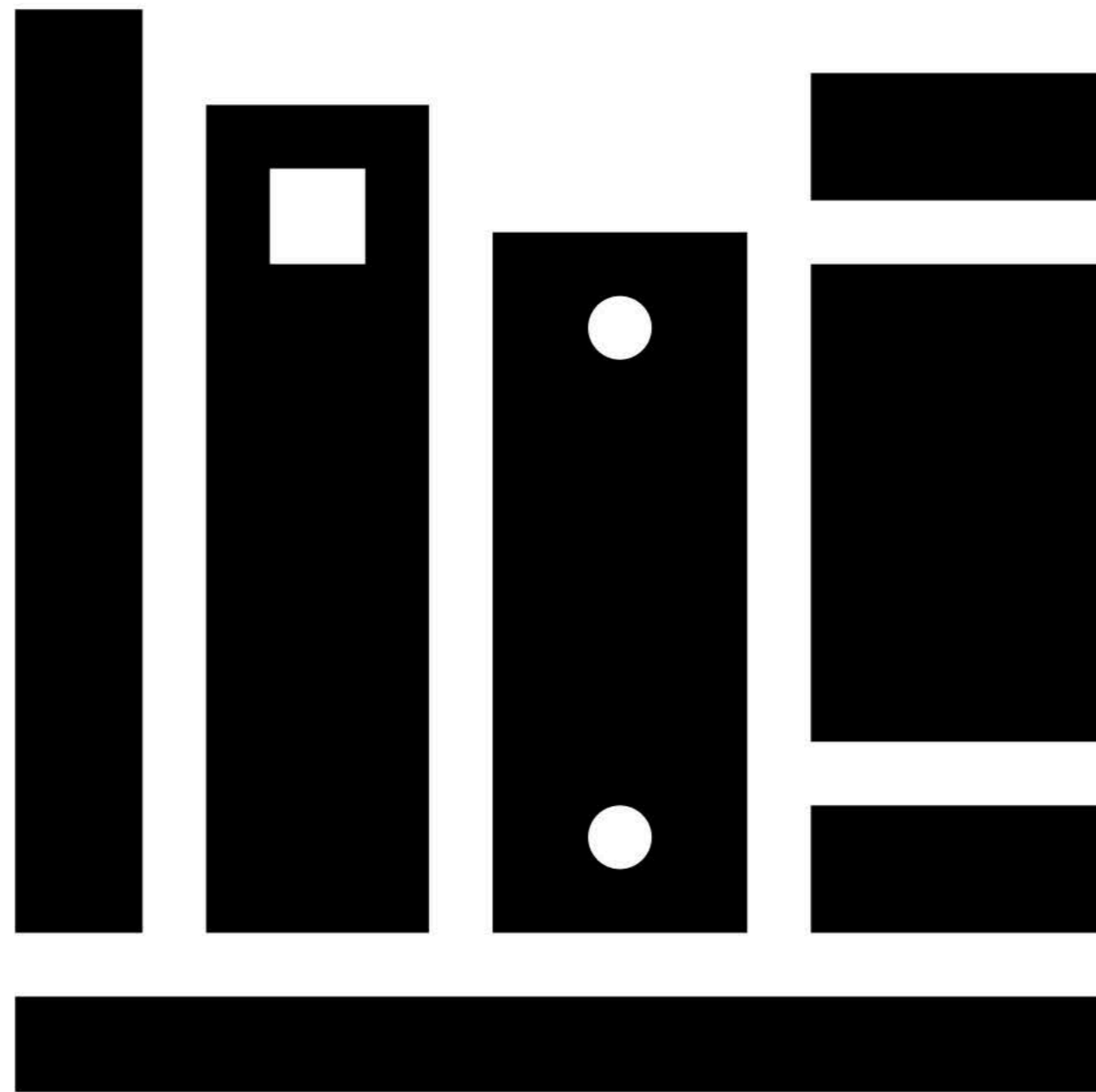
# What do we want to accomplish for our Service/Mission Project?

We would like to hold a student led book drive and Bible donation to support the work Judy's Hope is doing in our community.



# Proposal for Books

**Goal #1: Students will contact local friends and family (via social media or in person) and ask for donations of gently used or new children's books ranging from preschool to middle school age-appropriate material.**

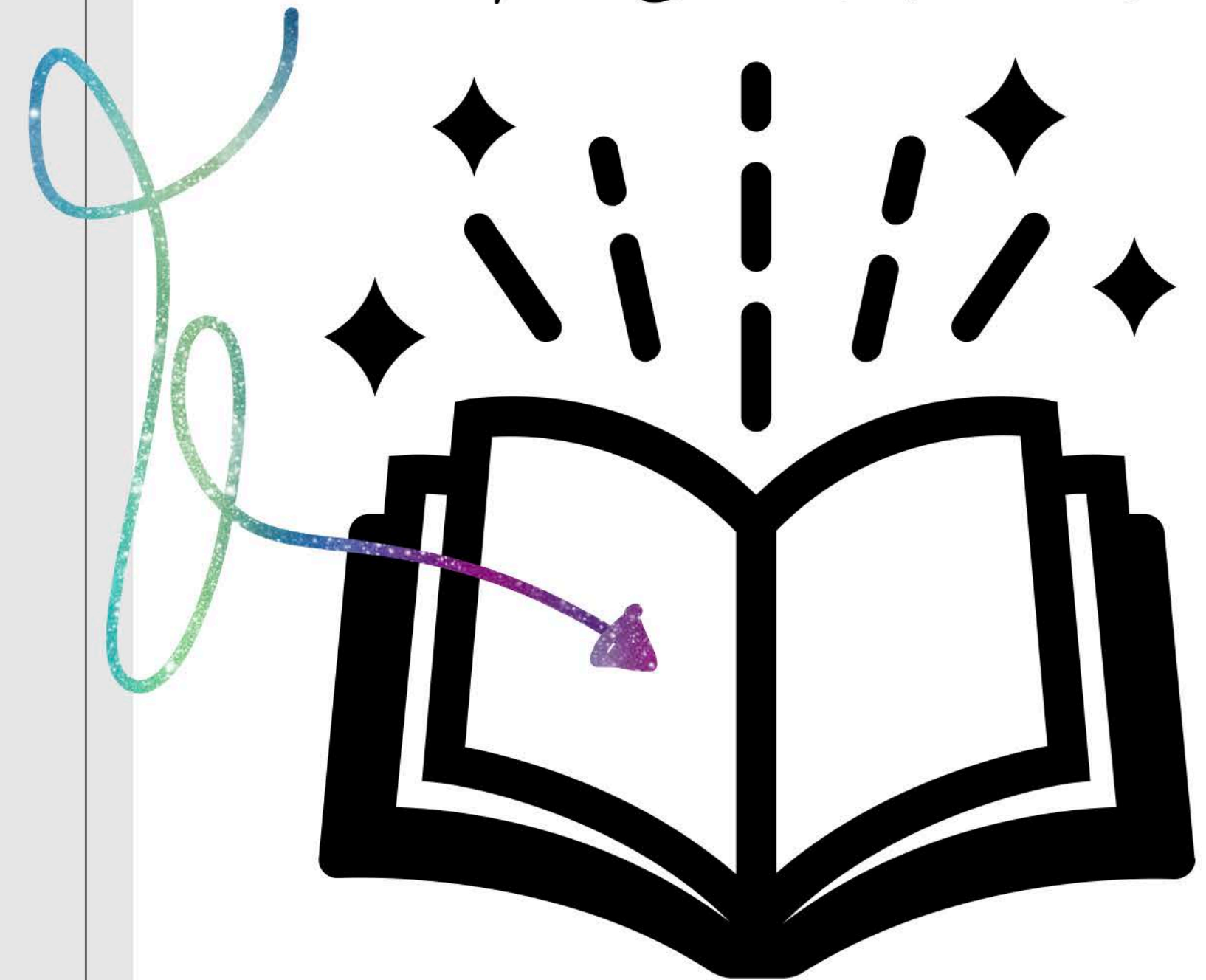


# Proposal for Bibles

- Goal #2: Students will contact friends, family, and or businesses (via social media or email) with a provided Amazon link that will direct them to be able to buy a bible (or multiple bibles) in support of the Judy's Hope families. They will also be able to choose a bible verse that will we hand write on the inside cover for the family who receives it.

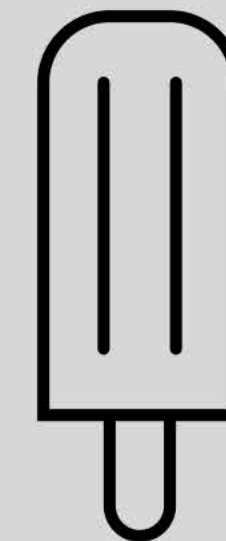
*Phil 4:13 "I can do all things through Christ who strengthen me."*

*love. The Jones Family*

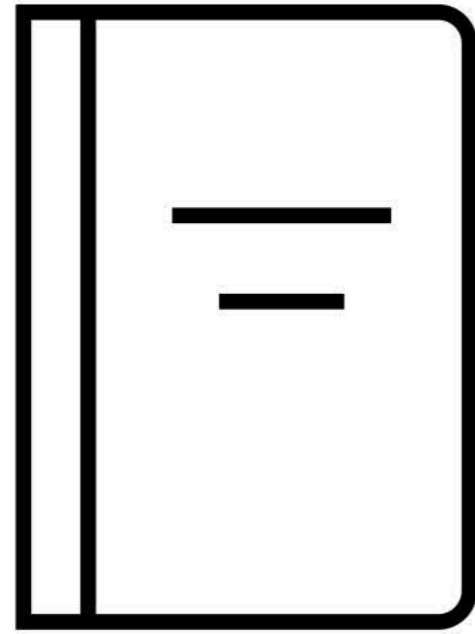


# Motivation for Student Participation

- The students will be competing for one person in each grade to win a shadow day with the teacher (or principal!) of their choice.
- In addition, each grade will compete against the other grades for total books donated with a prize of a Recess Popsicle Party.







# Student Participation

- Students will lead the way in acquiring local book donations and sending out links for Bible donations.
- Each student will create a special art piece/card to be included in each children's bible to encourage the recipient in their walk with Jesus.
- Upper school students will be in the Chapel on drop off day to direct donations to their age group collection point, where they will then quickly review the books and place in appropriate bins, ready for transport to Judy's Hope.
- For each book brought in by the student, they will receive one raffle ticket with their name and grade to be put into a drawing to win a special day shadowing the teacher of their choice.



## How will this help?


- Judy's Hope: this project will allow the families of Judy's Hope to have enjoyable and age-appropriate reading material already outfitted in their new home as they rebuild their lives with the support of the Judy's Hope team and their local community.
- Students: this will allow our children to take ownership in collecting donations, to follow directions by making sure their book donations meet the standards of the project (i.e., intact cover, no markings in the book), and to create perseverance in their quest to win a special day shadowing one of their teachers.
- School: this will allow our school to come together as a family in support of a great cause.



# Miscellaneous to consider:

- What will this cost the school or Judy's Hope? This will be a donation-based project to involve our school and community in outreach to help families in need. Bins to hold the books could potentially pose a cost, but outreach will be attempted from Lowe's, Home Depot, and/or WalMart.
- This can be a one-time Mission project or an annual book drive that we can strive to meet the needs of any local organization who could use donations of this nature.
- Follow up data will be published to include how many books were donated (and where, if there is overflow), how many sponsorship bibles were purchased, and on-going data collection of families impacted from Judy's Hope.
- Staff/School involvement:
  - Use of the Chapel to collect book donations
  - All students to coordinate donations, upper school students to coordinate book drop off, organization, and packing of bins
  - Art teacher to coordinate cards to be distributed in children's Bibles
  - Estell family to transport book bins to Judy's Hope for their onsite storage (any overflow donations that cannot be utilized at Judy's Hope will be coordinated for donation to the local Head Start programs for distribution to their families).



A stack of several books with various colored covers (red, blue, green, brown) is positioned on the right side of the image. The books are stacked on a light-colored wooden surface. The background is a solid teal color.

**POWERS, K. (N.D.). ABOUT – JUDY’S HOPE. JUDY’S HOPE.  
RETRIEVED MAY 13, 2022, FROM  
[HTTPS://WWW.JUDYSHOPE.ORG/ABOUT/](https://www.judyshope.org/about/)**